

Major Scales for Mallet Percussion

C Major

Arpeggio



F Major



Bb Major



Eb Major



Ab Major



Db Major



Gb Major



Cb Major



G Major



Musical notation for the G Major scale, showing the ascending and descending lines on a treble clef staff. The key signature has one sharp (F#).

D major



Musical notation for the D major scale, showing the ascending and descending lines on a treble clef staff. The key signature has two sharps (F# and C#).

A Major



Musical notation for the A major scale, showing the ascending and descending lines on a treble clef staff. The key signature has three sharps (F#, C#, and G#).

E Major



Musical notation for the E major scale, showing the ascending and descending lines on a treble clef staff. The key signature has four sharps (F#, C#, G#, and D#).

B Major



Musical notation for the B major scale, showing the ascending and descending lines on a treble clef staff. The key signature has five sharps (F#, C#, G#, D#, and A#).

F# Major



Musical notation for the F# major scale, showing the ascending and descending lines on a treble clef staff. The key signature has six sharps (F#, C#, G#, D#, A#, and E#).

C# Major



Musical notation for the C# major scale, showing the ascending and descending lines on a treble clef staff. The key signature has seven sharps (F#, C#, G#, D#, A#, E#, and B#).

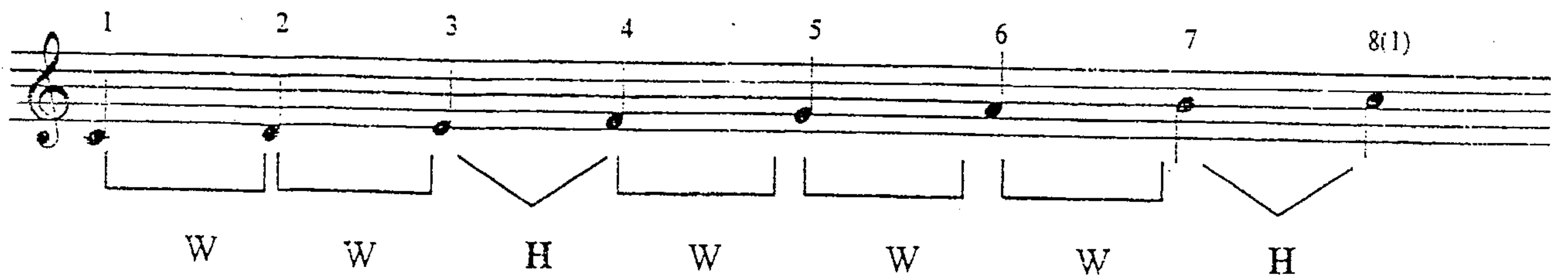
Chromatic Scale



Musical notation for the chromatic scale, showing the ascending and descending lines on a treble clef staff. The ascending line starts on C and moves up by half-steps to B, while the descending line starts on B and moves down by half-steps to C.

Construction of a Major Scale

- A major scale is made up of a series of eight notes having a particular sequence of whole-steps(W) and half-steps(H). Half-steps occur between scale steps 3 & 4, and 7 & 8.



Circle of 5ths

